



United Aluminium



//tfs

tension fabric system

//tension fabric system

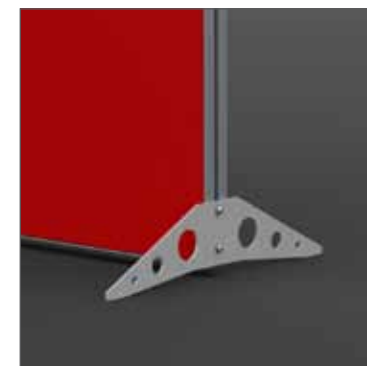
unibox[®]
exhibition system

Unibox TFS allows simple fitting and removal of tension fabric graphics. Frames are simple to assemble using just one tool.



Range of freestanding flat display panels in various standard sizes or bespoke. Integral system channel allows easy attachment of accessories

Freestanding double sided frame with slimline rectangular feet or optional side mounted feet.



//tension fabric system

portable

easy assembly

expandable





Curved 2x2 metre double sided frame.



Connecting frames together to make a seamless graphic exhibition wall structure with 4 metre totem. Numerous configurations are possible.



//tension fabric system

showrooms

exhibitions

reception and foyer areas

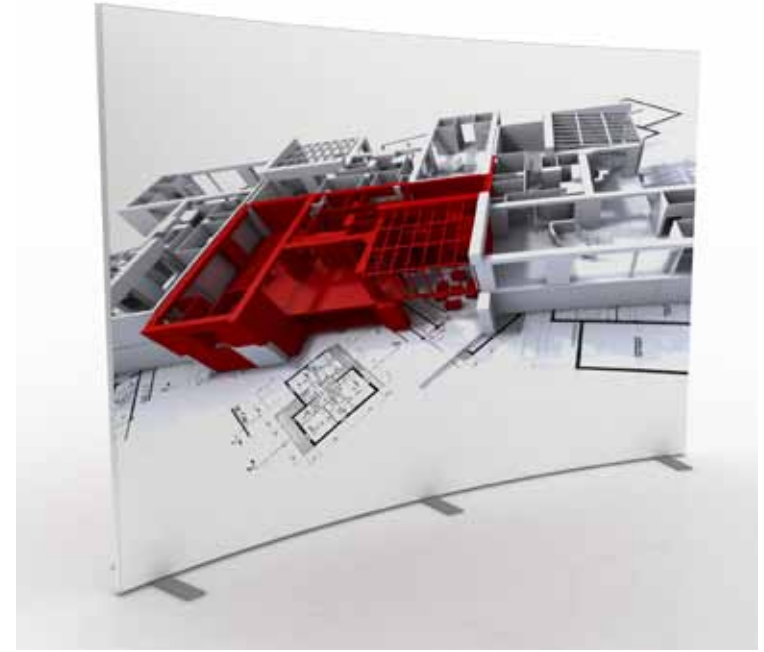
roadshow events

museum graphics

interiors

//tension fabric system





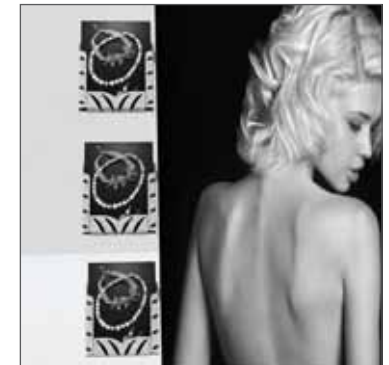
Range of freestanding curved display panels in various standard sizes or bespoke.

portable

easy assembly

expandable

Integral system channel allows easy attachment of accessories



Wall mosaic utilising wall hung large single sided profile UA10169 or slimline UA11437



//tension fabric system

showrooms

exhibitions

reception and foyer areas

roadshow events

museum graphics

interiors

portable

easy assembly

expandable



Ceiling hung double sided frame. Integral system channel allows easy attachment of accessories.



Single sided wall mounted frame.

//tension fabric system



portable

easy assembly

expandable



//LED Lightbox in TFS system

A lightweight display lightbox featuring easy to change printed fabric graphics, utilising cutting edge LED lighting technology. Gives an even spread of light with no hotspots. Highly energy efficient with an expected lamp life in excess of 50,000 hours resulting in a hassle free product with low maintenance and running cost.

- Even spread of light with no hotspots.
- Highly energy efficient.
- Seamless graphics up to 3.5m high x 50m wide.

portable

easy assembly

expandable



//features and benefits

Features

Slimline frame profile.

High quality LED technology with an expected lamp life in excess of 50,000 hours.

Easy to insert PVC edge strip.

Even light distribution with no hot spots or shadow.

Energy efficient.

Benefits

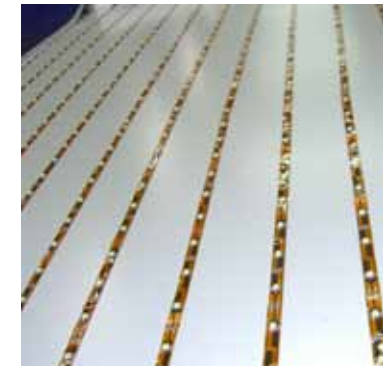
Frameless graphic for maximum impact.

Zero maintenance and only 36W power per square metre.

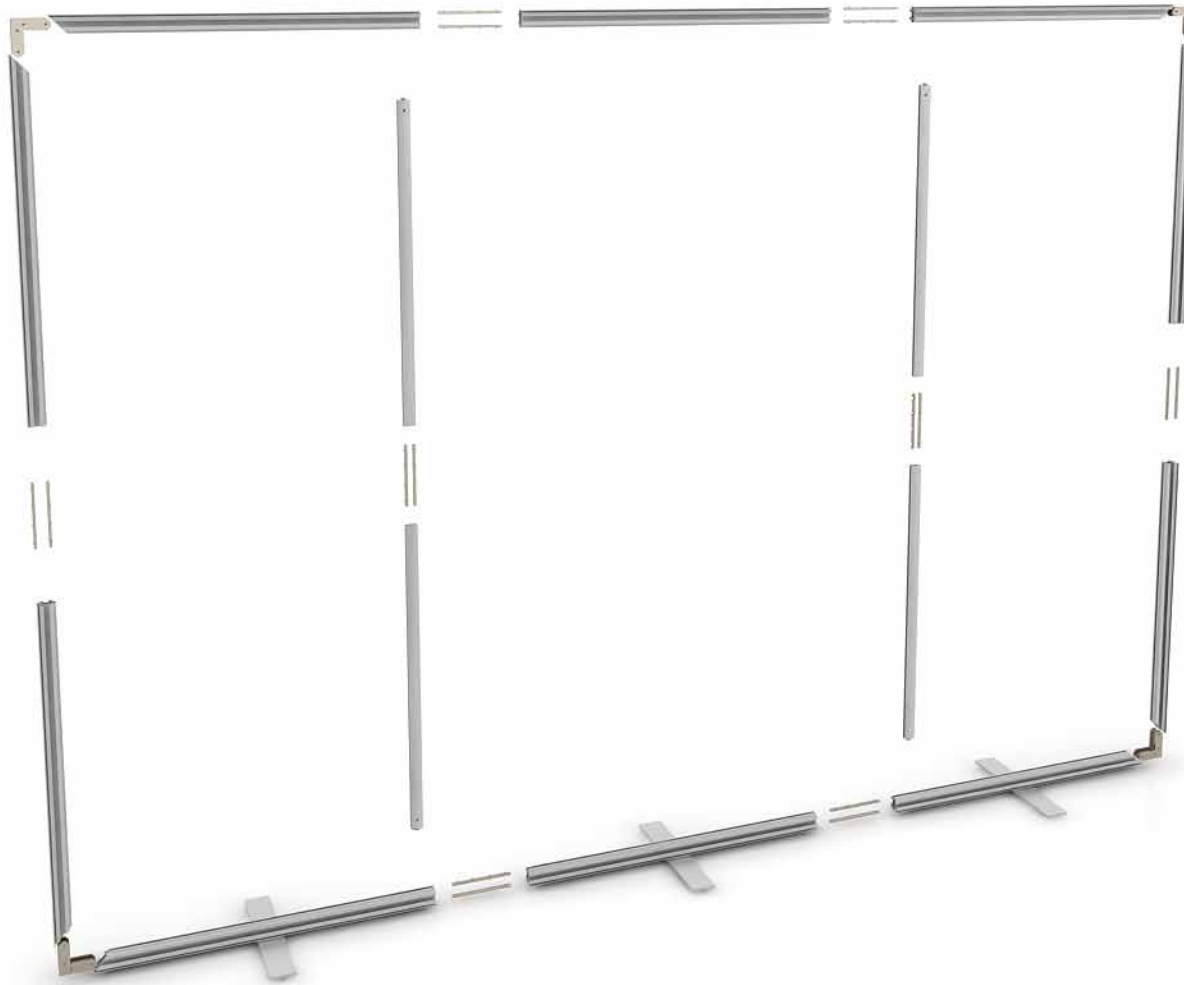
Quick and easily changable graphic.

Upto 3.5m high x 50m width.

Low carbon footprint.



//double sided frame



1. Connect aluminium frame together using corner brackets UA10775 [works with 1 but 2 brackets per corner are recommended to give a neatly aligned and robust mitre].

2. Fabric has silicone strips sewed into edge which is pushed into facing channel on aluminium frame.

3. Screw feet into frame using M8 countersunk screws into roll nuts.



Intermediate support bars required on sizes 2m and over.
Extension bars required for knock-down kits only.
Example shown is 3.5 x 2m.

//double sided frame

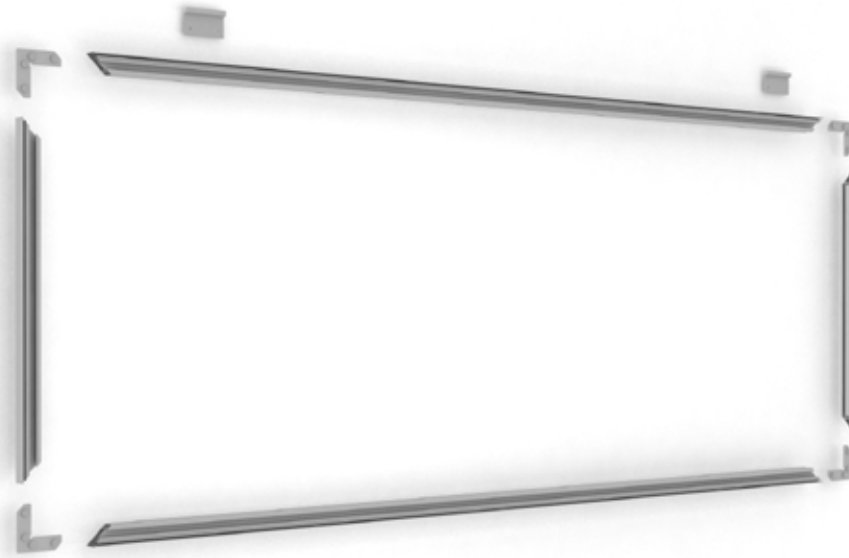
portable

easy assembly

expandable



//single sided frames



UA10169 single sided profile utilises UA10775 corner brackets and is fixed to wall with UA10173 brackets.



UA11437 micro single sided profile utilises UA4398 corner brackets.
Micro frames fix directly to the wall through the frame.

1. Connect aluminium frame together using corner brackets UA10775 [1 per corner for single sided].

2. Fabric has silicone strips sewed into edge which is pushed into facing channel on aluminium frame.

3. Screw brackets into wall.

4. Hang frame over bracket flange at an angle and then flatten once located in channel.



//fabric insertion

Step 1

Insert the fabric by pushing the silicone strip into the channel of the extrusion. The fabric has a tab to allow for easy extraction.

Step 2

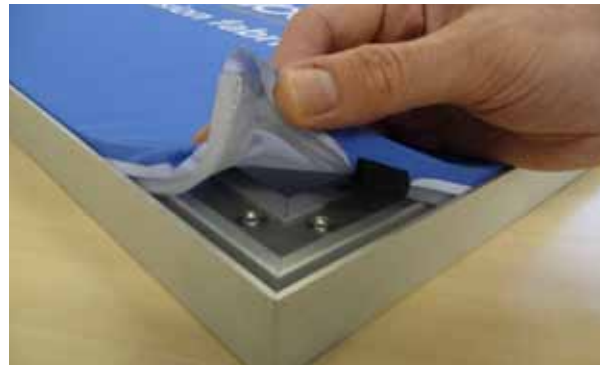
Once all the silicone strip has been placed into the channels of the extrusion frame, smooth out any wrinkles with your hand.

Step 3

The product is now ready for use.

how it works

//easy to assemble



//features and benefits

Features

Flexible modular design.

Graphic support detail keeps fabric in tension.

Graphics can be easily rolled or folded to compact size for convenient transportation.

The product uses over 30% reclaimed and recycled material.



Benefits

Flexible and expandable.

Flat seamless look.

Low logistics cost.

Sustainable and environmentally friendly.

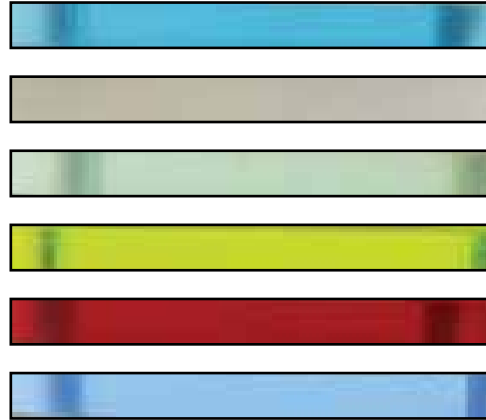


//accessories

- Literature holders
- Poseur table kit
- Spotlights
- Workstation counter kit
- 2 alternative feet
- Carry cases

//acrylic colour choice

select from a choice of six standard colours.



//go configure

//customise your display



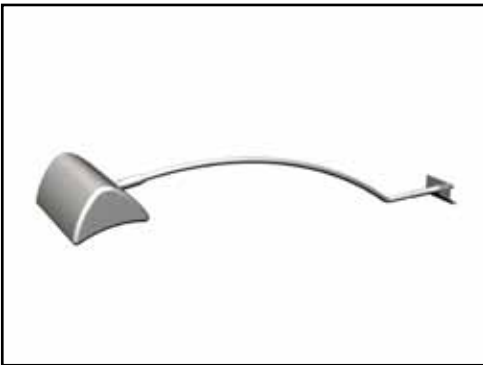
A4 acrylic literature holder. Can be either front or side mounted. Available colour options shown above.

Poseur table kit. Tops available in six standard colours.

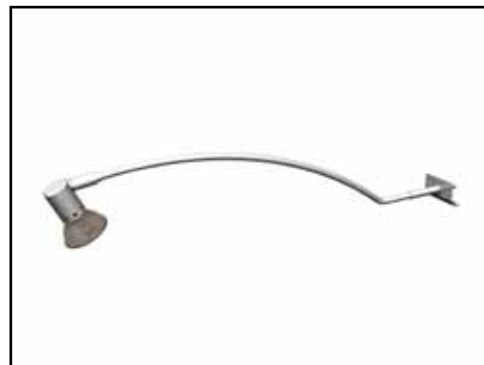
A4 steel literature holder. Can be either front or side mounted.



2 carry bags available.



240V 150W linear halogen.



12V 50W capsule swan neck.



UA9876 Folding portable counter kit. Can be assembled in 5 minutes and fits into UA6406 carry case, shown inset. Includes top. Acrylic panels to match other accessories available to special order.

//profiles and connectors

 <p>W 31.5 mm H 43.25 mm 4.25 mm 8.5 mm</p>	 <p>W 46.5 mm H 50 mm 4.25 mm 8.5 mm</p>	 <p>W 16.5 mm H 35 mm 8.5 mm</p>	 <p>W 26 mm H 35 mm 8.5 mm</p>	 <p>W 17.5 mm H 23.6 mm 4.25 mm</p>	 <p>W 66.5 mm H 24.8 mm 4.25 mm</p>
<p>UA 10169 Single sided banner frame profile</p>	<p>UA 9544 Double sided banner frame profile</p>	<p>UA 2667 Support beam profile</p>	<p>UA 4696 Support beam profile</p>	<p>UA 11437 Single sided micro banner frame profile</p>	<p>UA 10584 Lightbox profile</p>
					
<p>UA 10775 90 ° Corner connector</p>	<p>UA 4398 90 ° Corner connector</p>	<p>UA 11964 Extension bar/ 180° connector for micro TFS profiles</p>	<p>UA 3832 Extension bar/ 180° connector</p>	<p>UA 5532 Profile connector for UA2667</p>	<p>UA 4181 Wedge connector - frame to frame (2.5/2.5)</p>

//connectors and accessories



UA 10189
Rectangular base plate 445 x 76 x 10mm.
UA4794
245 x 76 x 10mm
Finish powder coat silver sparkle



UA 10469
Side mounted foot



UA 10173
Wall mounted bracket



UA 7585
Eye bolt and roll nut set



UA 10182
Silicone strip (100M roll) 3mm thick x 15mm W.



UA 3997
Swan neck lamp 240V 150W



UA 3998
Swan neck lamp 12 volt 50W



UA 4809
Daisy chain connector for swan neck light power leads



UA 6272
3mm Allen key
UA 6273
4mm Allen key
UA 6274
5mm Allen key



UA 4807
Carry case with castors



UA 6406
Fabric carry case



UA 4370
A4 acrylic literature holder available LH/RH and front fixed



UA 10420
Poseur table kit



UA 9876
Folding portable counter kit

United Aluminium

//tension fabric system

United Aluminium Ltd.
Greenside Way, Middleton,
Manchester, M24 1SW, UK

t: 0845 277 6000
int. t: +44 161 655 2100
f: 0845 277 6001
e: sales@unibox.co.uk
w: www.unibox.co.uk

TFSBrochure_15G//09/03//11

unibox[®]
exhibition system

available from:

//tension fabric system