

//contents

Unibox Modular System

Introduction to basic system elements
Working with our connectors
How to use this guide and icons

Aluminium profiles

For exhibition and interior construction
For showcase

Gaskets and trims

Connectors and hardware

Sliding door accessories
Hinged door accessories
Profile locks
Extension bars, wedges, brackets
Nuts and inserts
Glass to glass
Spiders
Articulating knuckles
Showcase knuckles

Accessories

Shelving accessories
Literature holders
Foot plates
End plates
Castors and feet
Slotted upright shelving

Lighting and electrical

Showcase light fittings
Exhibition light fittings
LED accessories
Replacement lamps

Tools

Index

Price list



//basic elements

The basic elements of the Unibox Modular System consist of profiles, connectors and accessories.

The investment that has been made in Unibox Modular System components permits simple assembly of complex structures for a vast range of applications, including exhibition stands, retail displays and interior solutions, amongst many others.



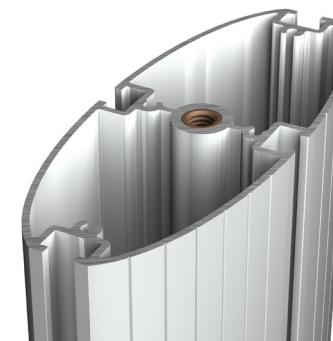
//profiles

Unibox extruded aluminium profiles are designed with 'C' channels, hollow sections, and bosses which can be used with connecting elements and can also perform a wide range of additional functions.

All profiles are supplied in a decorative satin silver anodised finish.

Coloured, textured, and other finishes can be supplied to order.

Typically, profiles are designed to be uprights or cross members but many can be used as either to suit the desired application.



//channel

The width of the Unibox profile channel is 8.5mm and the internal depth is 7mm.

Combined with our connectors this allows you to fix other Unibox profiles or accessories to it. It is also compatible with profiles from many other systems.

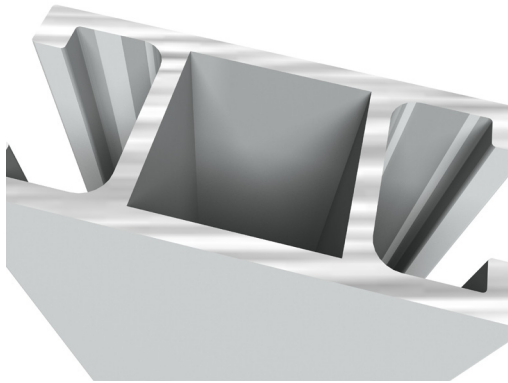
The channel can also be utilised to secure panels (graphic, acrylic, glass, timber and metal).

There are a variety of accessories to secure these elements.

United Aluminium Greenside Way Middleton
Manchester M24 1SW United Kingdom
t: 0845 277 6000 f: 0845 277 6001
t int: +44 161 655 2100

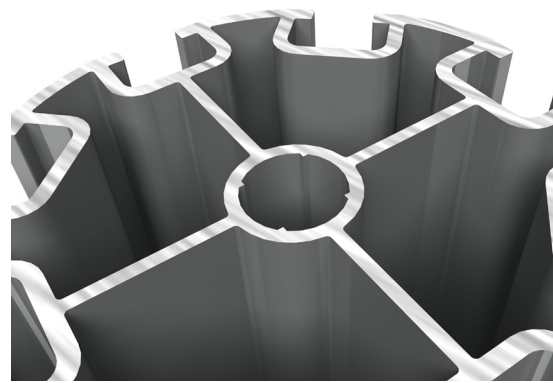
e: sales@unitedaluminium.co.uk
w: www.unitedaluminium.co.uk
e: sales@unibox.co.uk
w: www.unibox.co.uk

unibox[™]
aluminium profiles



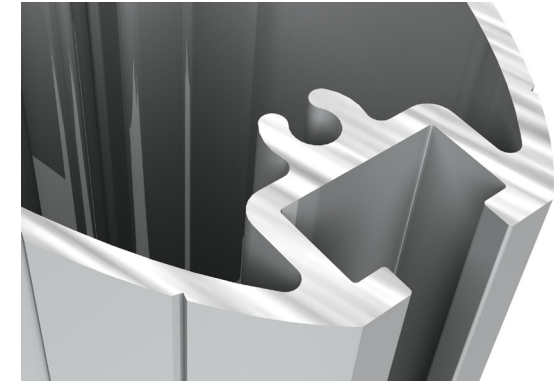
//hollow section

Permits insertion of profile locks and various end caps.



//centre boss

Which is common to many profiles is designed to accept durable, threaded steel inserts (M8) for attachment of feet and other accessories.



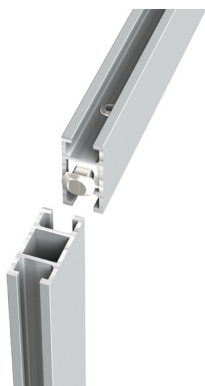
//screw boss

Common to many profiles these are designed to accept insertion of self-tapping or thread forming screws without need for tapping a thread.

United Aluminium Greenside Way Middleton
Manchester M24 1SW United Kingdom
t: 0845 277 6000 f: 0845 277 6001
t int: +44 161 655 2100

e: sales@unitedaluminium.co.uk
w: www.unitedaluminium.co.uk
e: sales@unibox.co.uk
w: www.unibox.co.uk

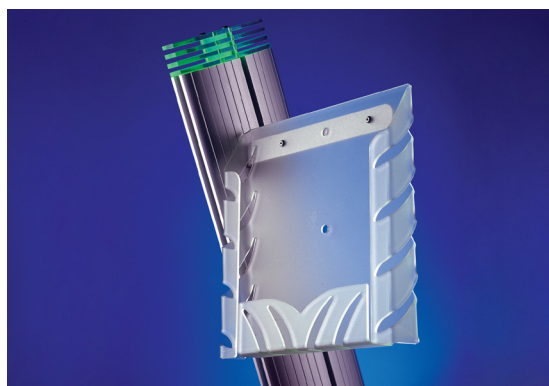
unibox[™]
aluminium profiles



//connectors

A wide variety of Unibox connectors are available. These are designed to allow perpendicular, angled, end-to-end and parallel joining of profiles.

Please refer to the connectors chart in this section of the catalogue for specific suitability.



//accessories and other system components

Unibox is frequently used for applications in retail, graphic, exhibition and interior design and a wide range of components and accessories have been developed to enhance the system in these areas.

The system is constantly evolving and so should you have a specific requirement or new application, then please contact us to discuss.

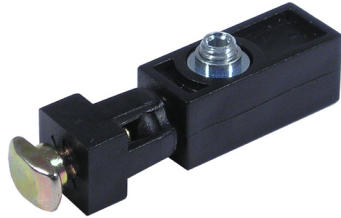
United Aluminium Greenside Way Middleton
Manchester M24 1SW United Kingdom
t: 0845 277 6000 f: 0845 277 6001
t int: +44 161 655 2100

e: sales@unitedaluminium.co.uk
w: www.unitedaluminium.co.uk
e: sales@unibox.co.uk
w: www.unibox.co.uk

unibox[™]
aluminium profiles

working with our profile locks

linear pull profile lock



Connects beam profiles into opposing post profiles with 90° butt joint. Can be fixed in either plane.

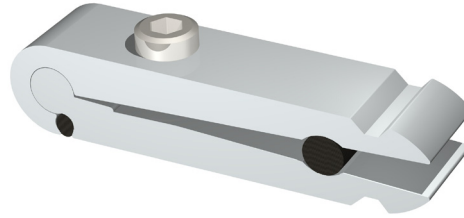


Bi-directional fitting. Detent prevents pin popping out of body. Profiles being joined can be twisted into place or slid along channel.

ua4253-H
ua4253-V

working with our profile locks

expanding profile lock



Connects beam profiles into opposing post profiles with 90° butt joint.
UK patent no. GB2431447

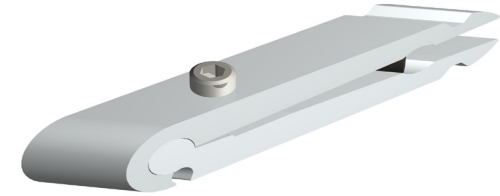


Spring loaded clip mechanism permits profiles to be clipped into place before tightening. Particularly suitable for connecting curved beams or double lock profiles.

ua5532

working with our profile locks

expanding 45° profile lock



Connects beam profiles into opposing post profiles with 45° butt joint.
UK patent no. GB2431447

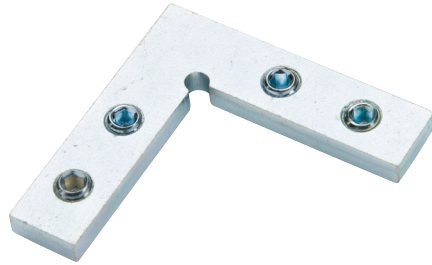


Spring loaded clip mechanism permits profiles to be clipped into place before tightening.

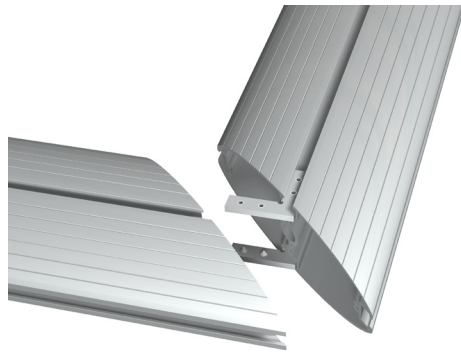
ua6208

working with our connectors

flat 90° connector



Connects profiles together with 45° mitre joint. Can be used in conjunction with UA4399.



Simple, strong and discreet. Secures profile joints by means of grub screws.

ua4398

working with our connectors

folded 90° connector



Connects profiles together with 45° mitre joint or 90° butt joint when extra strength is required. Can be used in conjunction with UA4398.

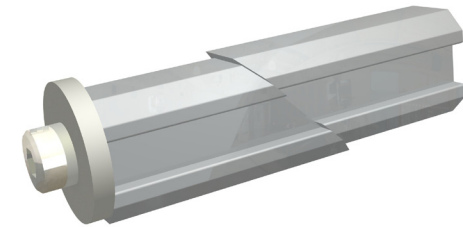


Simple, strong and discreet. Secures profile joints by means of grub screws.

ua4399

working with our connectors

wedge connector



Slides into profile channel to join two profiles together side by side. Can be used at ends of profile; removal of nylon washer also allows connection in middle of profile.

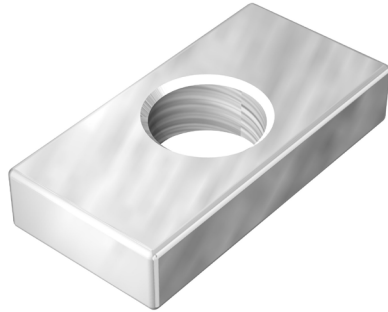


Subtle way to join two profiles together, to create bespoke channel arrangements.

ua4181-B

working with our connectors

mega nut M8



Slides into profile channel to provide threaded hole fixing point. Will accept any M8 Unibox accessories or can be used to secure items of your choice by M8 screw.

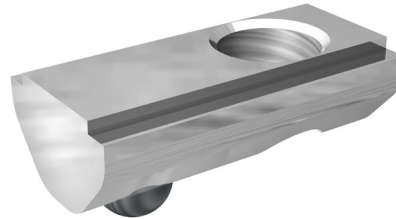


Convenient method of fixing accessories to profiles.

ua4700

working with our connectors

spring loaded roll nut M8



Can be "rolled" into profile channel to provide threaded hole fixing point. A sprung loaded ball bearing prevents the nut from slipping out of position. Will accept any M8 Unibox accessories or can be used to secure items of your choice by M8 screw. Also available in M6 size.



Convenient method of fixing accessories to profiles. Can be retro-fitted to profiles and has accurate positioning feature.

ua6072

working with our connectors

extension bar



Slides into profile channel to join two profiles together end to end.

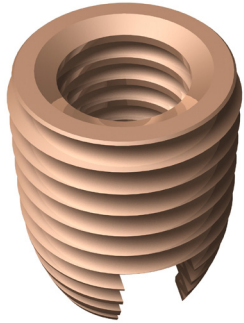


Subtle and strong way to join two profiles together, either to make an assembly easier to transport, or to extend the length of a profile.

ua3832

working with our connectors

self tapping insert M8



Provides a strong M8 threaded fixing point at a profile end face, screwing into extruded boss.



Allows feet and end caps to be screwed to the profile with concealed fixings.

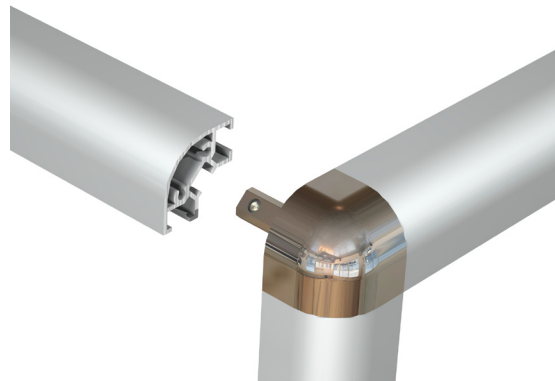
ua3833

working with our connectors

showcase corner knuckle



Joins three corner post profiles together to form a corner. Available in "round" and "square" styles at 90° & 135° angles.



Creates a flush corner joint for showcase assemblies.

ua2645c

//icons

To allow easy selection of Unibox profiles, icons appear alongside each entry to identify key features and suitability for various applications.

Some other components have a hex key icon, identifying what size hex key is required for assembly.



1.5mm leg



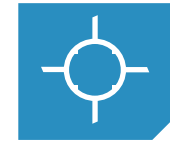
2.5mm leg



Square hollow profile



M4 screw port profile



Centre boss profile



Angle connector compatible



Profile end fittings available



Profile rolling available



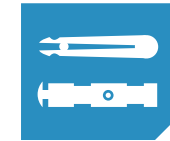
Can be used as a post



Can be used as a beam



Technical guide available



Profile lock compatible



Use with 3mm hex key
(also 2, 2.5, 4, 5, 6, 10)



2D or 3D CAD data available

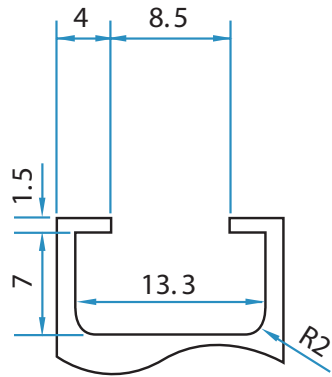
United Aluminium Greenside Way Middleton
Manchester M24 1SW United Kingdom
t: 0845 277 6000 f: 0845 277 6001
t int: +44 161 655 2100

e: sales@unitedaluminium.co.uk
w: www.unitedaluminium.co.uk
e: sales@unibox.co.uk
w: www.unibox.co.uk

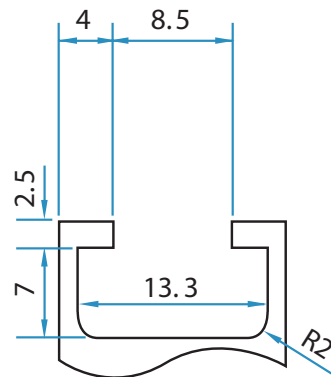
unibox[™]
aluminium profiles

//generic profile details

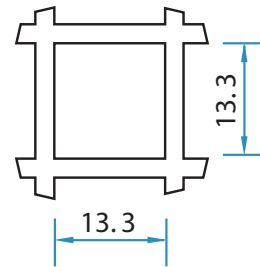
1.5mm leg type



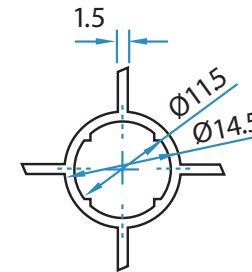
2.5mm leg type



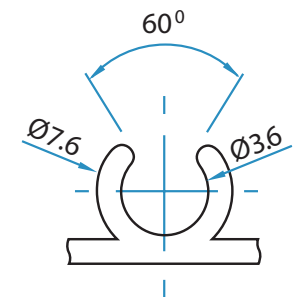
square hollow detail



centre boss detail to suit
ua3833 M8 insert



screw port detail to suit
M4 or No 8 screw



United Aluminium Greenside Way Middleton
Manchester M24 1SW United Kingdom
t: 0845 277 6000 f: 0845 277 6001
t int: +44 161 655 2100

e: sales@unitedaluminium.co.uk
w: www.unitedaluminium.co.uk
e: sales@unibox.co.uk
w: www.unibox.co.uk

uniboxTM
aluminium profiles